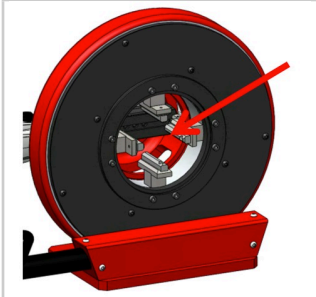




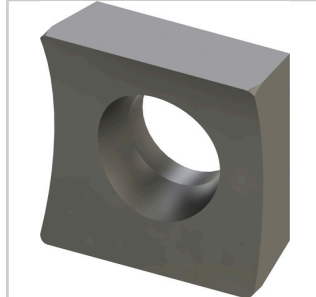
Ø12 - Ø115 mm
 Ø0,5 to Ø4,5 "

- Big range: Ø12 to Ø115 mm through concentric clamping on the full diameter range**
Burr-free tube squaring and bevelling machine
- thickness < 3mm (according to material)
 - Ideal tool to face a band saw cut before automatic welding
 - Accurate manual advance: 0.1 mm step graduation 4/1000 inches
 - Sliding adjustment of tool holder offers easy diameter change and optimal tip wearing
 - 30° and 45° outside bevel possible with optional tool holder.
 - Squaring and bevelling in one operation.
 - **Possibility to use two tools simultaneously.**
 - Minimal straight length of the tube: 58 mm.
 - Delivered in wooden box.

Weight: 37 kg / 82 lbs
 Motor 1100W with large speed range (2 gear)
 Worm and gear transmission for optimal speed range



4 concentric stainless steel jaws: straight length for clamping 58 mm



HSS TIALN HIGH QUALITY Reversible blade (two cutting edges)



Bench mounting option: CCBSB-001

References	Accessories	Consumables
DC115-BM2 (220 V) DC115-BM1 (110 V)	DCM115-XXX : Clamping jaw for DC115	<p>DC-OUT1: Box of 10 blades, TIALN HSS-E</p> <p>DC-UOUT1: Blade, TIALN HSS-E (single unit)</p> <p>DC-OUT2: Blade tightening screwTool adjusted to the diameter of tube to be machined in just a few seconds</p>

