

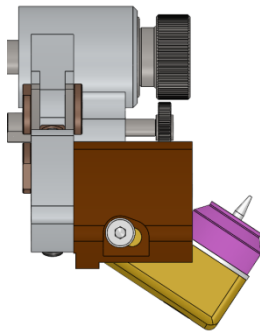
Ø19 to Ø115 mm



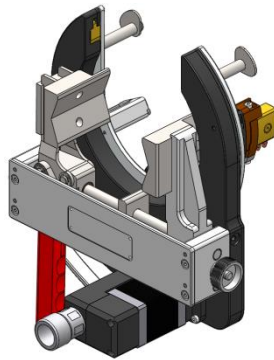
Technical features:

- Water cooled welding torch
- Symmetrical clamping by toggle clamp
- **Motor with encoder** : allows for tungsten electrode start-up at all angles and a wide range of diameters
- Axial adjustment of the electrode
- Weight: 6,8Kg (without cables)

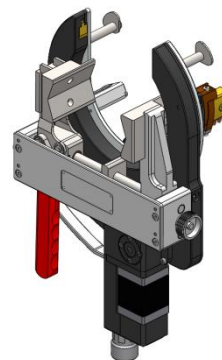
ADVANTAGES



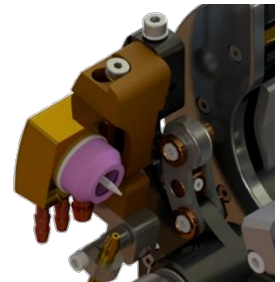
Torch angle adjustment:
welding under flange or
short T angle



Symmetrical clamping
/ Straight motor



Symmetrical clamping
/ Angle transmission
motor



Mechanical profile guide:
Constant arc voltage

References

SATO-115A01: SATO115 with symmetrical clamping and straight motor.

SATO-115A02: SATO115 with symmetrical clamping and angle transmission motor.