

Ø19 to Ø80 mm

AXXAIR

INNOVATIVE ORBITAL SOLUTIONS

www.axxair.com
INNOVATIVE ORBITAL SOLUTIONS

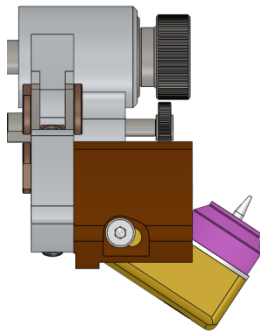
V2 - 02-2012



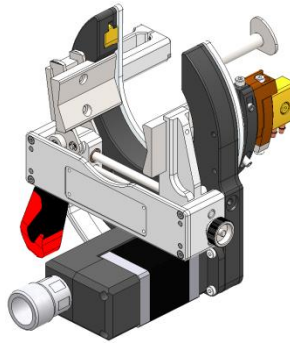
Technical features:

- Water cooled welding torch
- Symmetrical clamping by toggle clamp
- **Motor with encoder** : allows for tungsten electrode start-up at all angles and a wide range of diameters
- Axial adjustment of the electrode
- Weight: 3,4Kg (without cables)

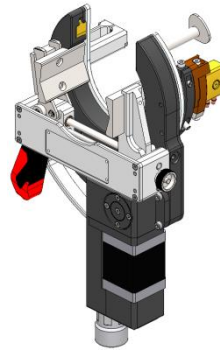
ADVANTAGES



Torch angle adjustment:
welding under flange or
short T angle



Symmetrical clamping
/ Straight motor



Symmetrical clamping
/ Angle transmission
motor



Mechanical profile guide:
Constant arc voltage

References

SATO-80A01: SATO80 with symmetrical clamping and straight motor.

SATO-80A02: SATO80 with symmetrical clamping and angle transmission motor.

